

**Pohlmans**

# AUTUMN WINTER

catalogue 2022

## Fuchsia

Charming elegant flowers that  
bring joy to any garden!



### GERALDTON WAX

These waxy flowers bring  
a welcome burst of colour  
to your garden



### GREVILLEAS

Explore the stunning new  
additions to the Kings  
Park Collection.



## Autumn / Winter

### HAPPY NEW YEAR!

And happy new gardening season....welcome to our latest edition of the Pohlmanns catalogue.



Autumn is the best time of year to garden in Queensland with warm soil and the moisture still present in the garden. With the humidity and heat of Summer long gone, it's a great time to get back into the garden to prepare the soil for the new plantings of vegetables and cool season annuals and perennials. Now's the perfect time to get outside and plant a beautiful display of winter colour and a feast of winter vegetables.

The new seasonal annuals like pansies and violas return along with your favourite winter veggies. Be sure to check out all the latest additions of Diggers heirloom vegetables being added to the punnet collection. Plenty of new perennials, along with some new natives to spice up your garden and bring the pollinators to your backyard. We thank you for your support and hope you enjoy reading this latest edition.



Be sure to check our social pages for latest updates and news.



## 2021 FARM BIOSECURITY PRODUCER OF THE YEAR

We are proud to have been awarded '2021 Farm Biosecurity Producer of the Year' at the Australian Biosecurity Awards hosted late last year by the Australian Government Department of Agriculture, Water and the Environment.

Pohlmanns have been recognised for our contribution to the development of BioSecure HACCP, a national industry on-farm biosecurity program developed by Greenlife Industry Australia (GIA) and Hort Innovation. We've been involved with the program since its inception and have been accredited under the program since 2013.

This award is acknowledgement of almost a decade of hard work on BioSecure HACCP from all our teams across the nursery.



*We are proud of what we do every day. We are proud of our system to manage day-to-day biosecurity requirements and future biosecurity risks that provides customers with the highest possible quality plants year-round.*



## SHOWPIECE™

Showpiece roses are large-bloomed and beautifully fragrant with a glorious old-world look – but with all the benefits of modern disease resistance, thanks to expert plant breeding.

There are several lovely varieties in the Showpiece roses range, each as bewitching as the other. As if being beautiful and easy to grow weren't enough, Showpiece roses are also deliciously perfumed. Breathe one in and you'll be smiling.

The Showpiece fragrant shrub roses produce a beautiful show of colour in either pots or planted throughout the garden in any sunny position. Perfect for cutting for bringing inside too.



Lipstick

Blush

Berry

Champagne



# Roses

*Roses are one of the world's favourite flowers. Their beautiful fragrance and stunning blooms are sure to bring much joy to any gardener. We have selected some of the best performing varieties to bring you a beautiful range to suit every spot in your garden.*

## Terrazza Range

The Terrazza range of roses are a stunning series of long flowering miniature roses, well suited to pots, patios and small gardens. The strong & robust plants produce mass displays of beautiful blooms. Height 40 - 70cm.



New  
Purple



New  
Saturnus King



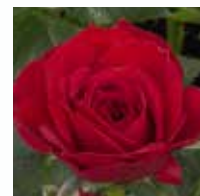
Clear White



Yellow



Orange



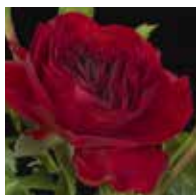
Red



Highly Fragrant  
Frangrance King



Festival



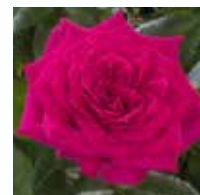
Carmen Red



White



Baby Pink



Violet

## Jewel Range

Jewel Roses are an outstanding, delightful, small growing rose, excellent for patio pots. They produce mass displays of slightly scented flowers. Height 30cm.

New



Zepeti®

A true innovation in the world of Roses. Zepeti is a semi double flowering cupped deep red flower that is extremely resistant to fungal diseases like powdery mildew and black spot. Makes for a great addition to the Queensland environment with its continuous flowering. In 2020 Zepeti won a Gold award in Europe in the miniature rose category.

Grows to a maximum of 70cm which is perfect for patio pots and its continuous flowering makes a great display all year round.



# HARDY HEBES



## LILAC MIST

These bloomin beauties are a breeding breakthrough! Bred to withstand the heat and humidity of Queensland. Lilac Mist has a naturally compact, neat habit with mid green foliage. Lilac purple flowers appear through mid-winter.

Available in 140mm pots in winter.

## BLACK SATIN

This compact shrub will catch your eye with its dark, glossy, satin-like, deep coloured foliage. New growth starts out deep green and matures to a black. Bright pink flowers will appear in Spring making a great contrasting display. Has great humidity and heat tolerance.

Available in 140mm pots in winter.



## DIAMONDS IN THE DARK® CREPE MYRTLES

Diamonds in the Dark® are a revolutionary range of Crepe Myrtles. They feature flawless near-black foliage that emerges in early spring, followed by masses of vivid blooms from summer until first frost.

Available in 7 amazing flower colours!

[DiamondsintheDark.com.au](http://DiamondsintheDark.com.au)





# GREVILLEA

## KINGS PARK COLLECTION

The Kings Park breeding team have continued to bring new and exciting grevilleas to the market. They feature prolonged flowering periods in brilliant colours from yellows to oranges through to the reds and pinks. Native grevilleas require less water, less fertiliser and provide habitat for our native wildlife. Once established they respond to a light prune and require full sun, well-drained soil and will work well in mixed garden beds. New to the range this season are the stunning **'Showtime'** and **'Red Coral'**.

New

### SHOWTIME

Another fantastic performer bred by Kings Park and Botanic Gardens. This lovely spreading grevillea flowers 12 months of the year bearing cylindrical reddish/pink flowers. 'Showtime' is expected to reach dimensions of 1.5m wide and 1.5m wide within five years.

### SCARLET MOON

A very successful grevillea hybrid which can be grown virtually anywhere in Australia. This lovely plant is a hardy, bird attracting shrub that boasts vibrant silvery-green foliage and white flower buds which open to become beautiful large and spectacular scarlet flowers that continue to bloom throughout the year. Attracting birds and nectar-loving insects, 'Scarlet Moon' brings life and tranquillity to your garden. An ideal specimen for an informal screen, it reaches 1.6m tall and 1.6m wide.

New

### RED CORAL

A lovely addition to any garden with startling bright red flowers contrasting against the silver-green foliage making it stand out in any location. Ideal in waterwise gardens as well as native areas, rockeries, or mass planted in streetscapes or verges. Also well suited for borders or embankments, flat ground covers and any place you need a good performing, low growing, spreading plant. The bright red toothbrush-like flowers appear in abundance in spring and will attract the native birds to your garden.

### OUTBACK SUNRISE

A compact bird attracting shrub with vibrant, green foliage and distinctive, yellow flowers and bright red styles blooming all year round. A great addition to native gardens, mixed garden beds and is great for creating an informal screen. Plant in a full sun position with well-drained soil. Lightly prune to maintain a dense, compact habit. For optimal growth apply a slow release native fertiliser every 6-12 months. Grevillea Outback Sunrise will grow to a height of 2m and a width of 1m.



### RSL SPIRIT OF ANZAC

A spectacular Grevillea hybrid, the 'RSL Spirit of ANZAC Grevillea' was released to commemorate the ANZAC Centenary. It has vibrant red flowers, grey-green foliage and has a resilience to tough environments. It's a beautiful bird-attracting addition to any garden.





# Camellias

Paradise Camellias are a tough and hardy breed of plants. Camellia sasanqua, whilst not as well-known as their japonica cousins, are gaining popularity worldwide for their vigour, versatility and ease of growth.

Australia is a world leader in the breeding and development of Camellia sasanqua and plants are being successfully grown throughout Australia from south east Queensland, all along the east coast through to Melbourne, also Tasmania in the south and in Adelaide and Perth further west.



1.



2.



3.



4.



5.



6.



7.

Camellia sasanqua prefer a well-drained acid soil and full sun or light shade. They will not tolerate waterlogged soil and heavy soils should be improved with plenty of organic matter prior to planting. Good drainage is essential. Heavy or clay soils will require raised beds and addition of organic matter to improve drainage conditions.

Our range of Australian Bred Camellias include:

1. Paradise **Petite White** 2. Paradise **Pearl** 3. Paradise **Rebecca** 4. Paradise **Blush** 5. Paradise **Diana**  
6. Paradise **Helen** 7. Paradise **With Love** 8. Paradise **Sayaka** 9. Paradise **Sylvia** 10. Paradise **Avalanche**  
9. Paradise **Venessa** 11. Paradise **Petite Pink** 12. Paradise **Barbara**



8.



9.



10.



11.



12.





# Geraldton Wax



These stunning new hybrids have been developed by Helix Australia, world leaders in Geraldton Wax breeding. They have been extensively trialled here in Queensland and performed incredibly well.

Their waxy flowers bring a welcome burst of colour to your garden in late winter and early spring. They develop into a rounded shrub and have a low water requirement once established.

The flowers make a beautiful cut flower with a great vase life. Available in winter in 14cm pots in a range of colours, from pinks, purples, whites.





# LONG LASTING 6POTS

Let Pohlmanns Long Lasting 6 Pots introduce you to an easy 'no fuss' way to garden. With strong established plants and a great range of selections including hardy flowering perennials and popular landscape varieties, all designed to provide a colourful low maintenance garden.

NEW



**Lavender**

**Spanish Eyes**

Hardy and tough, the Spanish lavender has fern like foliage with a long flower spike.

NEW



**Geranium**

**Frosty Stars**

Geraniums are a reliable favourite. The silvery foliage and bright colours make Frosty Stars a delightful addition to the range.

other varieties available include:



African Daisy  
Mixed



Bacopa  
Blue



Bacopa  
White



Festuca  
Glauca



Gazania  
Green Leaved Mix



Gazania  
Silver Leaved Mix



Geranium  
Bush Mixed



Geranium  
Ivy Mixed



Gerbera  
Mixed



Lavender  
Hidcote Blue



Lavender  
Munstead



Petunia  
Spreading Mix





# PREMIUM STRAWBERRIES

*Pohlmans have been working with local breeders, the DPI and commercial runner producers to bring a new range of high yielding strawberries produced by runners and bred for QLD conditions.*

*These varieties have been bred for their high sugar content, suitability to QLD environment, and most importantly the home garden performance. The beauty of these are they aren't 'supermarket' varieties but best suited to home gardeners, because they are best picked and eaten within a day. Super sweet and super juicy. Supermarket types tend to have longer shelf life but not be as sweet.*

*Available in 125mm pots from May to July.*



## LOWANNA

A day-neutral variety and forms a medium dense, highly productive plant. Fruit is conical and glossy red in colour when fully ripe. Flesh is light red throughout and firm. In frost-free regions, with the right care Lowanna will produce fruit almost all year round.



## REDLANDS JOY

Fruit is large and one of the sweetest strawberries in Australia. Produces high yields throughout the season. Softer, more tender and a little lighter in colour than Californian varieties. Resists rain damage. Fruit are well displayed and easily harvested.



## SUGARBABY

A mid-season variety. Fruit production commences in early June. Fruit are exceptionally attractive red, glossy, conical, L to XL sized (20g), firm and resilient, with resistance to rain damage. Flesh is bright red, of low acidity, and excellent sweet flavour. Fruit are well displayed, and easily harvested. Eating quality is exceptionally high.



# THE DIGGERS CLUB



Generations of gardeners can't be wrong! **THE DIGGERS CLUB** have championed the heirloom movement and here's why...

They have superior flavour, excellent disease-resistance and varieties that cannot be found at the supermarket. The best choice for home gardeners, they are like treasured antiques, passed from one generation to the next because of their superior flavour and long harvest. Specialising in hard to find vegetables and flowers, **THE DIGGERS CLUB** trial and taste what you grow, so that you can savour the flavour of heirlooms enjoyed by generations of gardeners, just like you!

## NEW THIS SEASON IN PUNNETS



### **BROCCOLI 'WALTHAM'**

A popular variety which forms large heads and sides shoots can be picked for up to three months.



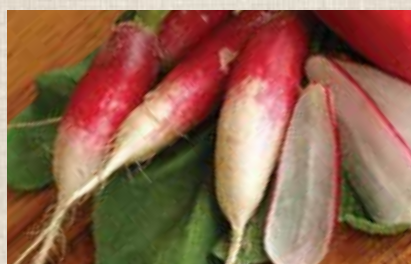
### **CABBAGE 'MINI WOMBOK'**

A crisp baby cabbage with almost white heads. Great in salads, stir fries or pickled. Fast to harvest.



### **LEEK 'KING RICHARD'**

An excellent early variety produces long shanks that are easy to clean and a cooks favourite. Can be picked early for baby leeks.



### **RADISH 'FRENCH BREAKFAST'**

A real favourite with their long rose scarlet radish with a crisp white flesh and mildly pungent flavour.



### **BEAN 'FRENCH FEAST'**

A true French bean that the kids will love! Produces 11-12cm long stringless green beans continuously on compact bushes.



### **CAPSICUM 'CALIFORNIA WONDER'**

The most popular heirloom bell-styled capsicum in the world. Versatile and packed with flavour and nutrients, they're equally as good whether eaten green or red.



### **SILVERBEET 'FORDHOOK GIANT'**

Traditional and reliable with delicious large deep green leaves and white stems. A gardener's favourite, producing stems up to 50cm tall.

For more information visit [www.DIGGERS.com.au](http://www.DIGGERS.com.au)



# Signature

## S E R I E S

### PREMIUM SELECTED VARIETIES

The Signature range was first developed by John Pohlman Snr. A collection of the best performing annuals for the Queensland market. This range continues to grow with new plants being added as new genetics improve.



Pansy Giant Red Blotch Pansy Giant Clear Yellow Pansy Giant Clear White Pansy Giant Silver Blue Pansy Giant Clear Yellow Pansy Giant Neon Violet

Be sure to check out the large flowering pansy collection this season. The beautiful large blooms on these get bigger and bigger as the weather gets colder.



Left: Stocks mixed  
Top right: Cineraria Mixed  
Bottom right: Polyanthus Mixed



## GERANIUM

### Violet Picotee

A new addition this season. Keep an eye out for these and the many other great performers in this range to create a vibrant winter display.

**NEW**





# LIVING COLOUR



## **Dianthus** **CRUSH BURGUNDY** **& CRUSH ORANGE**

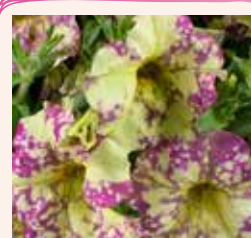
**NEW**

These new release Dianthus are another breeding breakthrough. These large double flowering varieties withstand the heat and humidity in the garden. They will initiate flowering without vernalisation (cold nights) and don't require long or short days. They are completely day length neutral. Available in two beautiful colours, Crush Orange and Crush Burgundy will capture your eye in the garden or as a display plant in a patio pot.

## **Dahlia Happy Days®** **ORANGE RED BI-COLOUR** **& CHERRY RED**

**NEW**

The latest addition to our offering of dahlias. The vibrant flowers pop and stand out against a contrasting dark bronze foliage. Grows to a height of around 30-40cm and perfect for garden beds or in pots. These tuberous perennials will flower from Spring through to Winter.



## **Petunia Splash Dance** **MAGENTA MAMBO** **& POPPIN PINK**

**NEW**

These two new petunias will make a real splash in your garden. With their eye popping colours this brand new speckled series of petunias is a truly unique addition to the range

## **Nemesia** **SWEET TREATS™**

Sweet Treats™ Nemesia feature small dark green foliage and large, highly fragrant flowers. They have a naturally neat, compact habit and produce endless flowers of saturated and contrasting colours over a long period of time. They are cold and heat tolerant and a trim after flowering will encourage rapid reblooming.

**HIGHLY**  
**FRAGRANT**



**Sugarberry**



**Vanilla Slice**



**Coconut Ice**



**Strawberry**



**Raspberry Lemonade**



**NEW**

## Penstemon DAKOTA BURGUNDY

This new hardy perennial provides stunning dark burgundy foliage year round. Tall pink flower spikes appear in summer which complement its deep dark foliage. Loves a warm spot in the garden. Mature growth: 70cm high x 40cm wide.



## Lavender LOVEHEART

An early flowering lavender with a gorgeous musk-pink feathery bract at the top of the flower spike. The beautiful fragrant foliage and flowers are great for picking as an indoor cut flower or for potpourri. A well-branched plant with high heat and humidity tolerance. Grows to 75cm.



White



Dark Royalty



Pink



Grand Purple

## Lavender TUSCANY

Lavender Tuscany produces extra-large, fragrant flowers on a well branched mounding plant habit. They have fantastic durability and are extremely heat and humidity tolerant. Grows to 50-60cm.



# Petunias showing off Double Splendour

Blueberries & Cream



MASSSES OF  
Blooms!



Midnight Gold

- Height: 25-30cm • Spread: 35-40cm
- Bloom Season: Spring - Late Summer

Double blooms, bursting with masses of flowers that sit neatly on compact plants. Enjoying full sun, these petunias will fill containers, window boxes and hanging baskets with seasonal joy.



## Fuchsia ASSORTED

These charming plants produce distinctive, elegant flowers in a variety of beautiful two-tone colours. Chosen for their outstanding performance in our local climate, our range of fuchsias are compact, early blooming and long flowering and will offer much enjoyment in pots or the garden.



# Pinktastic

calibrachoa

prolific bloomer

An early flowering, trailing ground cover that will be smothered in petite double two tone pink petunia- like flowers during the warmer months.

Perfect as a trailing ground-cover, spilling over a hanging basket or container. Pinktastic has been bred for uniformity of colour and extra long flowering time.

It is compact and easy to maintain and will provide an abundance of colour for many months of the year.



# Life INDOORS

*Green & Gold*

## Pothos

Affectionately known as devils ivy, the Pothos is arguably the easiest houseplant to grow. It has a trailing vine, which can be trained to climb on totems, walls, or into hanging baskets. Can withstand drying out for periods and comes in a wide range of colours and varieties.

*Jade Green*



*Goldilocks*



*Silver*



*Marjula*



*Marble Queen*



*Satin*



*Cebu Blue*



*Snow Queen*



# Ferns



*Boston*

Easy to grow and has long arching fishbone like foliage. Great feature fern in a hanging basket or shady part of the garden. Prefers high humidity to thrive.



*Korean Rock*

Lush dark green foliage in a dense mounding habit. Grows well under the shade of trees and shrubs to cover exposed soil, as well as a hardy houseplant in pots.



*Rabbit's Foot*

A unusual fern with its hairy 'feet like' rhizomes which creep along the soil surface. Reminiscent of the feet of a rabbit its delicate looking foliage is actually quite tough and makes for a hardy houseplant.



*Duffi*

An extremely tough and hardy indoor fern with arching leaves and tiny round leaves along the stem. Perfect for small pots around the home.

*Crocodylus*

With its reptilian looking leaf makings, it's sure to impress in any collection. A lover of high humidity makes for a good addition to the bathroom.



*Kangaroo*

A native to Australia, its large, dark green leaves resemble a Kangaroo foot once it matures. Adaptable to shady areas in the garden and for pots in the home, it's a relatively forgiving in nature and makes for a lush addition to the home.



*Button*

A native to New Zealand, this fern has cute round button like leaflets. Dark green in colour and suited to small pots. A hardy indoor fern.



*Curly Locks*

A close relative to the Boston fern but with tighter curlier foliage on a more compact plant. Perfect for small pots in the home.



Zanzibars or ZZ plants are low maintenance house plants with shiny, wide, oval, shaped leaves. Slow growing and can go for long periods with water. Can remain pot bound for many years as well, they make the perfect house plant. Our collection include:

# Zanzibars

## *Zanzibar Gem*

The original ZZ plant with its glossy green leaves and tall arching habit.



## *Zenzii*

Compact and cute, the Zenzii has tightly packed leaves and is perfect for smaller pots.



## *Jungle Warrior*

Its striking dark foliage is almost black when dormant and has contrasting bright green foliage which emerges during the growing season.

# Peperomia



## *Piccolo Banda*

Beautiful, silver-green leaves with striking purple veins running through each leaf. Compact and a low water user makes for a perfect desk plant.



## *Moonlight*

Has stunning silvery moonlight foliage with heart shaped leaves. This Peperomia is a trendy and modern plant that is easy to care for and suits any spot in your room. Just give it a small amount of water once a week.



## *Napoli Nights*

Displays a pointed grey leaf with a striking red underside. Easy to care for and suits almost any spot in your room. Small amount of water required.





# MEGA 4 Pots

4 large established plants in flower  
Exceptional value for money  
Vibrant instant colour

The range now includes:



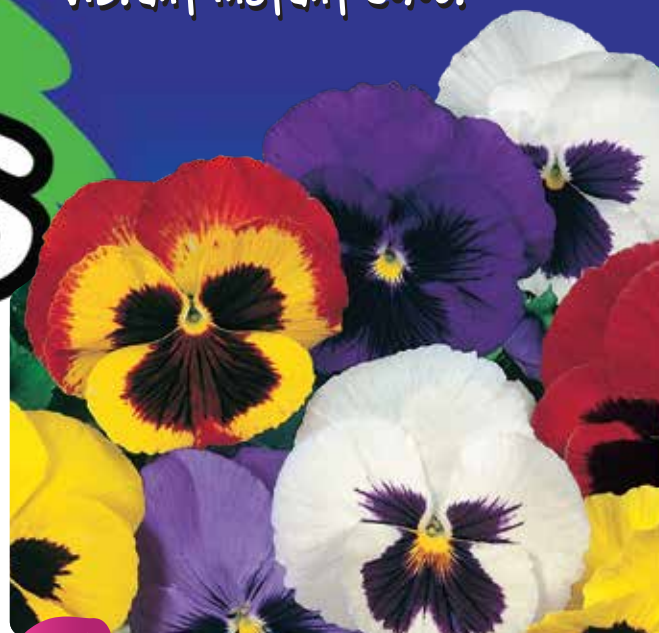
ALYSSUM  
White



DIANTHUS  
Mixed



DIANTHUS  
White Fire



NEW

PANSY  
Blotch Mixed



MARIGOLD  
Mixed



PETUNIA  
Velvet



PETUNIA  
Mixed



PETUNIA  
White



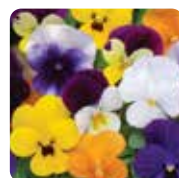
PETUNIA  
Red



SNAPDRAGON  
Mixed



PANSY  
Beaconsfield



ViOLA  
Mixed



NEW

ViOLA  
Delft Blue



We have expanded the range this season  
with a couple of new additions.



## SUSTAINABILITY UPDATE

### WATER

In the past 12 months we have managed to capture and re-use more than 25 million litres of water. Our drainage and capture systems are closing the loop on water consumption and preserving this precious resource.

### WASTE

All our plant labels, pots and trays are 100% recyclable. The trays can be returned to the nursery to be used many times over whilst the pots and labels can be placed into curb side recycling bins. We also now sort and dispose of our own garbage, further reducing our waste to landfill.

### ENERGY

We've purchased our first fully electric Utility Vehicle. Fitted with a solar panel, the vehicle is self-sustaining and doesn't need to be plugged in to charge. This is the first step in our plan to remove all petrol and diesel-powered vehicles from our operations. We are currently planning the installation of solar generation to cater for the nursery's energy needs and to charge our vehicles with renewable energy produced on site.

In 2021 we installed new LED lighting in our nursery areas to assist crop growth. These new LED's use 30% less energy than traditional lights and will allow us to grow better plants faster with less energy and water.

### CHEMICAL REDUCTION

We release beneficial insects into our crops every week to control insect pests in the nursery. This reduces the need for chemical sprays and has increased biodiversity across the nursery. We are letting nature work for us. Every plant produced gets an application of organic fertiliser and biopesticide at planting to promote healthy growth and reduce pests and diseases.

### LAND MANAGEMENT

We have removed weed species from the local Redbank Creek and replanted hundreds of eucalyptus for the local koala population, further enhancing the koala corridors across the property.



*"We continue to strive towards reducing our footprint on our environment."*

